

**CERTIFIED LAND CORNER RECORDATION**

DESCRIPTION OF CORNER EVIDENCE FOUND, AND ORIGINAL RECORD (If known)

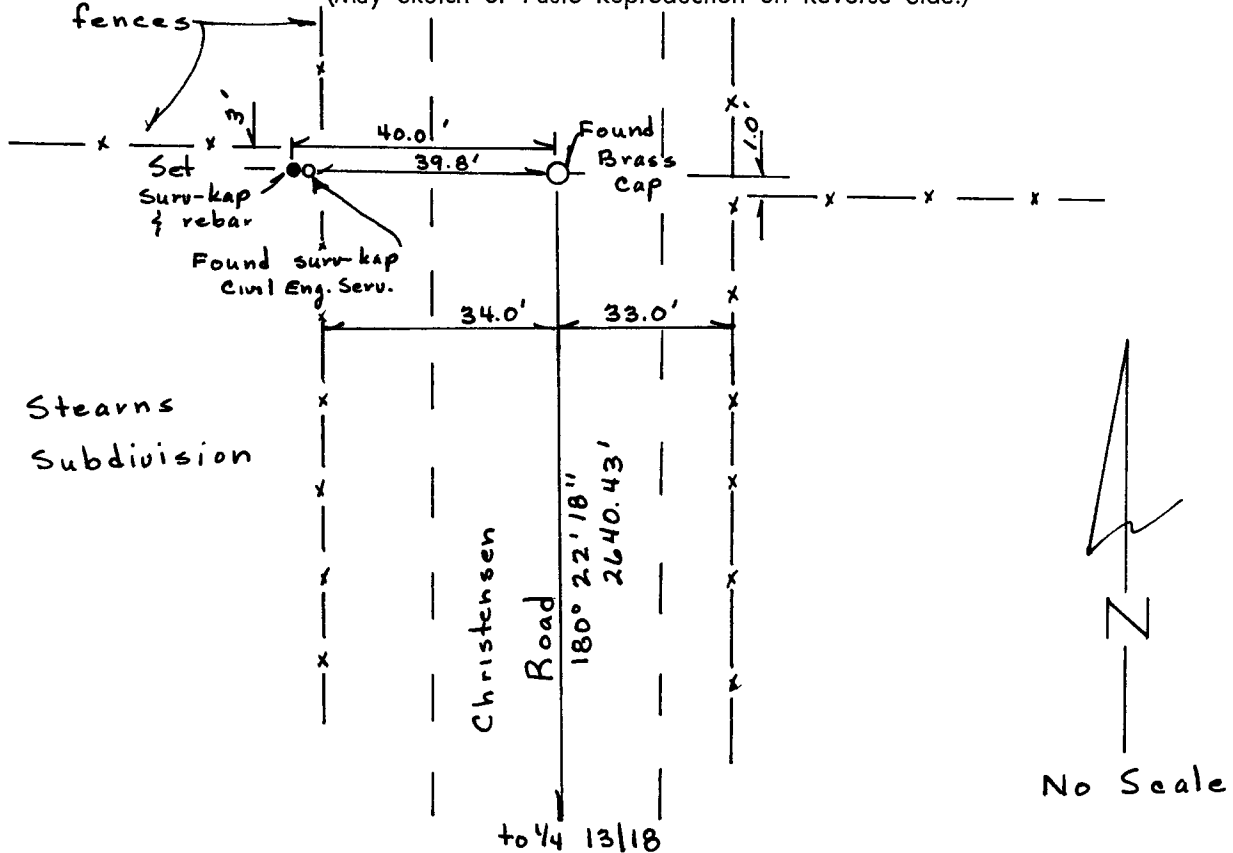
T.	12	7
14	13	18
N.		
R. 66 W.		R. 65 W.

Found 2" Brass Cap, L.S. 577, in Christensen Road.

DESCRIPTION OF MONUMENT AND ACCESSORIES ESTABLISHED TO PERPETUATE THE ORIGINAL LOCATION OF THIS CORNER:

Set Surv-kap and rebar,  $270^{\circ}32'52''$ , 40.00'.

SKETCH, WITH COURSE AND DISTANCE TO ADJACENT CORNER IF DETERMINED IN THIS SURVEY.  
(May Sketch or Paste Reproduction on Reverse Side.)



I, Robert C. Corbet, L.S. #495 certify that I have carefully performed or reviewed the work done on the diagrammed corner as reported on this recordation form and approve the same.

*Robert C. Corbet*  
Signature of Surveyor

L.S. 495  
Registration No.

STATE OF WYOMING,  
Office of Clerk and Recorder,  
County of Laramie

778066

This "corner record" was filed for record on the FEB 6 1985 day of 1985, 19\_\_\_\_, was noted on the cross-index plat and is assigned page No. \_\_\_\_\_, in book No. \_\_\_\_\_.

*Janet C. Whitehead*  
County Official

Cross-Index No. _____	T. _____	R. _____	Mer. _____
_____	T. _____	R. _____	Mer. _____
_____	T. _____	R. _____	Mer. _____
_____	T. _____	R. _____	Mer. _____
_____	T. _____	R. _____	Mer. _____
_____	T. _____	R. _____	Mer. _____
_____	T. _____	R. _____	Mer. _____

*T-3 T14 R46*